



# Serie RCSC/RCSCI



## CIRCULAR NON-RETURN DRAUGHT SHUTTER



(+34) 91 3235805  
(+34) 91 3235703



[www.difair.es](http://www.difair.es)



[info@difair.es](mailto:info@difair.es)

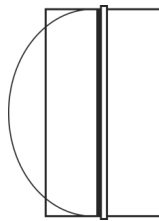


Avd. del Cno de lo Cortao, 28A, Nave 1  
28703 San Sebastián de los Reyes, Madrid.

# CIRCULAR NON-RETURN DRAUGHT SHUTTER SERIE RCSC / RCSCI



## MODELS

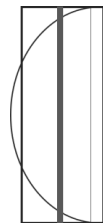


### RCSC

Circular non-return draught shutter, made of galvanized steel with aluminum flaps to be mounted between 2 ducts.

### RCSCI

Circular non-return draught shutter, made of galvanized steel with aluminum flaps to be mounted inside a duct.



The advantages of its application are:

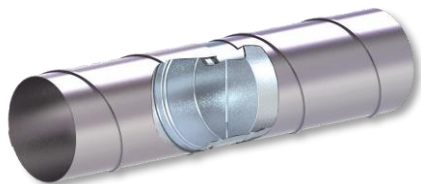
- To control air flow in ventilation systems.
- The aluminum flaps open when exposed to excessive pressure and close again when the pressure drops, thanks to a stainless steel mechanical spring.

## FEATURES

- Body made of galvanized steel.
- flaps made of aluminium.
- Shaft and springs made of stainless steel.

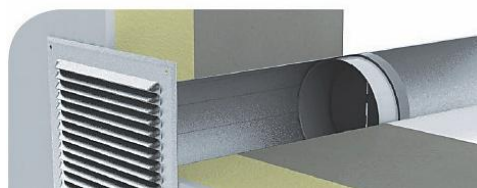
# CIRCULAR NON-RETURN DRAUGHT SHUTTER SERIE RCSC / RCSCI

## FIXING

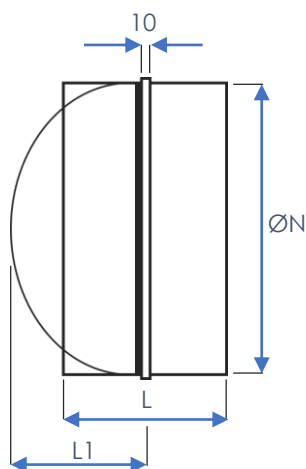


**RCSC:** For assembly, the draught shutter must be located between two ducts, acting as a junction between them, and the valve shaft must be in a vertical position.

**RCSCI:** For assembly, the draught shutter must be located completely inside the duct, and the valve shaft must be in a vertical position.

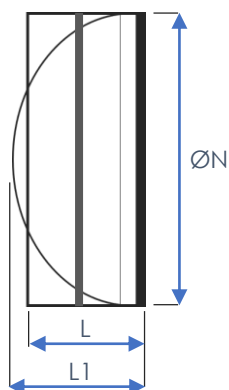


## DIMENSIONS



DIMENSIONS RCSC

Model	ØN (mm)	L (mm)	L1 (mm)
RCSC 100	99	88	48
RCSC 125	124	88	62
RCSC 150	149	88	73
RCSC 160	159	88	78
RCSC 200	199	88	98
RCSC 250	249	128	123
RCSC 315	314	128	156
RCSC 355	354	198	176
RCSC 400	399	198	198



DIMENSIONS RCSCI

Model	ØN (mm)	L (mm)	L1 (mm)
RCSCI 100	99	49	48
RCSCI 125	124	49	62
RCSCI 150	149	49	73
RCSCI 160	159	49	78
RCSCI 200	199	49	98



Any element of this document may be subject to change without notice from Manufacturas Difair-Clima, S.L. CONTAINS INTELLECTUAL PROPERTY. Any partial or total reproduction of the contents without the express authorization of Manufacturas DIFAIR-CLIMA, S.L. is prohibited. The information contained in this document is based on careful testing and experience. It reflects our knowledge and is for guidance purposes only. It is provided in good faith and the user should satisfy himself that the product is fit for use prior to any application. The values quoted are averages and should not be taken as maximum or minimum values for specific purposes. The manufacturer and distributor are not responsible for any non-recommended use or consequential damage.

THE INFORMATION PROVIDED IN THIS DOCUMENT SUPERSEDES ALL PREVIOUS VERSIONS OF THIS DOCUMENT.



(+34) 91 3235805  
(+34) 91 3235703



[www.difair.es](http://www.difair.es)



[info@difair.es](mailto:info@difair.es)



Manufacturas Difair-Clima, S.L.  
Avd. del Cno de lo Cortao, 28A, Nave 1  
28703 San Sebastián de los Reyes, Madrid.